



THE ALABAMA  
SUSTAINABLE  
AGRICULTURE  
NETWORK

# ASAN UPDATE

2020 Fall/Winter

Published Quarterly

## STATEWIDE FARMER NEEDS ASSESSMENT: CALLING ALL PRODUCERS AND ASPIRING PRODUCERS!

This fall, ASAN will begin a state-wide farmer needs assessment (FNA) of fifty sustainable producers and aspiring producers in Alabama, and we need your help to make it possible! During the fall and winter, our Farmer Support Coordinator Charlotte, along with three FNA Fellows, will visit producers on their farms and hold two-hour interviews with them. This assessment is being done **by** our network **for** our network, to create opportunities for relationship-building and resource-sharing **across** our network. Your participation is crucial to making this happen, and we are so excited to be launching it soon!

If you choose to participate, the interview will be a time where you can share about your farm, your personal history, the history of the land you farm, and your visions for the future of our agricultural system. Though we know this is a lot to cover in just two hours, the hope is that it can be a

conversational, informal time to hear more about you and how you are connected, or not yet connected, to ASAN and to other producers in your area. This is not your typical assessment, or survey. We will be focusing on much more than simple data and numbers. The questions are centered around ASAN's beliefs that a resilient agricultural system is ecologically regenerative, centered around those who work the land, just, intergenerational, and rooted in community.

The overall goal of the FNA is to gain a more textured understanding of what your goals and visions are as a producer, what your operations currently



From ASAN's 2016 Regional Food & Farm Forum at Camp McDowell in Nauvoo, photo credit: Whitney Moore

- ★ **WHO:** sustainable producers and aspiring producers in Alabama. (We understand sustainable means different things to different people!)
- ★ **WHAT:** 2-3 hour interview about all aspects of your farm, held outside on your farm (or at another COVID-safe location, if you prefer). You will receive a \$50 stipend
- ★ **IF INTERESTED:** email [charlotte@asanonline.org](mailto:charlotte@asanonline.org)

look like, and the challenges you experience. Then, with wide

*(Continued on page 5)*

### INSIDE THIS ISSUE:

Apply or nominate someone to join the ASAN board 2

Meet ASAN's newest team members 3

Report-back on ASAN's COVID support for farmers and markets 4

Report-back: Graze Responsibly 5

News from Your Neighbors 6

Classifieds & Resources 6

Upcoming Events 7

### WANT TO BE PART OF THE ASAN BOARD?

### KNOW SOMEONE WHO'D BE GREAT FOR THE ROLE?

Accepting nominations through Dec 7, 2020, and applications through Jan 8, 2021.

More on page 2!

## JOIN US FOR THE REIMAGINED 2020 FOOD & FARM FORUM, DEC 3-13!

As the events of 2020 have made the need for human connection more acute, we understand that the desire

for the Food & Farm Forum is ever stronger, its usefulness more apparent. And yet we know we cannot simply move our Food & Farm Forum onto Zoom; we have to completely reimagine and reconfigure the Forum both to share critical learnings together and to create a vital space of connection and revitalization for the year to come.

In that vein, ASAN's staff and Forum Planning Committee invite you to join us **Thursday 12/3 through Sunday 12/13 for eleven days of virtual "hands-on" skillshare sessions and network-wide "campfire" sessions -- all meant to inspire, skill-build, and deepen both our collective analysis and our commitment to one another.** We're even planning a virtual dance party!

The **skillshares**, led by people who have been honing their skills and knowledge

*(Continued on page 4)*

- ★ **WHEN:** Dec 3-13, 2020
- ★ **DETAILS:** [asanonline.org/forum2020](https://asanonline.org/forum2020)

## LETTER FROM THE ASAN BOARD PRESIDENT



Dear ASAN Community,

We made it through the spring and summer and now fall is upon us! I wanted to start this letter with an intentional reflection for where we are right now. Standing in this moment of time I am overwhelmed like I'm sure many of you are. Overwhelmed with the current state of the world - environmentally, socially & politically, overwhelmed with gratitude for the opportunity to continue this journey and overwhelmed with grief for those who are longer with us in the physical form. I am reflecting on how this has been the fastest yet slowest that the world has operated.

I'm constantly having moments that force me to come to terms with this "new normal" and not being able to be in spaces sharing energy and light with you all. We

still have a lot of "new normals" to shape out - in particular our annual food and farm forum. So much about the forum is centered around building relationships and community that we are intentionally working to keep those thoughts in mind to ensure that you all are still given an opportunity to connect with each other.

During these trying times, we need community more than ever. Our mission to create a just and resilient agriculture system in Alabama has become more urgent with the stress of the pandemic, racial justice, climate change and overall this multi layered apocalypse. We encourage you to join us virtually as we come together to engage in meaningful skill sharing and community building work.

Remember to breathe, take care of yourself and those around you, and most importantly - bloom where you are planted. We are stronger together.

Onward,

Dr. Jas

## APPLY — OR NOMINATE SOMEONE — TO JOIN THE ASAN BOARD OF DIRECTORS



The ASAN Board of Directors is a 9–14-person volunteer body responsible for guiding the overall strategic direction of the organization. ASAN's board is a grassroots working board. That means, for one, that board members are representative of ASAN's overall constituency – they're farmers, market managers, gardeners, business owners, nonprofit reps, etc., and they're embedded within the ASAN community.

Second, it means that they do more than just show up for a quarterly vote – they're actively involved throughout the year in strategizing, fundraising, outreach, and supporting ASAN's programs.

ASAN board members meet every 2-3 months -- twice a year in-person and via Zoom in between. Board members are required to serve on at least one of ASAN's board committees, and to be responsive and involved in

*(Continued on page 3)*

### CONTRIBUTORS: FALL/WINTER 2020

**Alice Evans** is the Executive Director of ASAN. She is a native of Huntsville, and now lives in Birmingham with her partner Lisa, their fur-babies, and their toddler, Moss.

**Marian Mwenja**

**Charlotte Pate**

**Dr. Jasmine Ratliff** started formally with sustainable agriculture as the community garden coordinator for Tuskegee through AmeriCorps VISTA in 2017 but always has been interested in growing her own food.

**Mindy Santo** is a women's empowerment coach in Birmingham and part-time staff member of ASAN. She works one-on-one and in-community to help clients get in the right mindset to bring their intentions into existence.

### ABOUT ASAN:

The mission of the Alabama Sustainable Agriculture Network is to deepen relationships between the people of Alabama, the food that we eat, and the place that we live.

ASAN provides peer-to-peer education, training, and networking opportunities to our broad network of farmers, gardeners, food-based businesses, agricultural resource organizations, and community leaders. We are a membership-based organization that seeks to improve the lives of small farmers and rural and urban communities and make a positive impact on the state's environment and health.

We define sustainable agriculture as farming that supports families and communities while conserving natural resources. We embrace the breadth of overlapping ways — ecological, economic, social, historical, etc. — that together, we can build a more sustainable food system. Find out more at <http://asanonline.org>.

### 2020 BOARD OF DIRECTORS

**Danica Abejon** — Sweet City Micros, Huntsville

**Holly Baker** — Climate Justice Alliance, Weogufka

**Olivia Cleveland** — This Mountain Farm, Henagar

**Aubrey Gallegos** (Secretary) — McDowell Farm School, Nauvoo

**Carol Gundlach** (Treasurer) — Alabama Arise, Montgomery/Shorter

**Jesse Murphy** (Vice President) — DSR Farms, Danville

**Jasmine Ratliff** (President) — Tuskegee

**Danielle Smith** — Tuskegee Extension, Tuskegee

**Sehoy Thrower** — Poarch Band of Creek Indians, Poarch

**Kristin Woods** — Alabama Extension, Grove Hill

## ASAN BOARD (CONT'D)

(Continued from page 2)

board and organization communications in the interim.

Board members must be deeply committed to ASAN, our work, and our values (see more at <http://asanonline.org/about-us>). Ideal board members are able to lean on their own experience and role within the food system, to inform systems-level thinking/strategy about sustainable agriculture in Alabama.

Board members serve for three years, and terms for this cohort of board members will officially start in March 2021, at the overnight board/staff retreat.

Applications are due January 8, 2021. The ASAN Governance/Nominating Committee will review all submitted applications in January/February after which the full board will vote on a final slate of new members.

If you are interested in serving on the ASAN board, we invite you to please fill out a board application! You can fill it out online at <http://bit.ly/ASANboardapp2021> or if you prefer, we can send it to you as a Word doc that you can print and mail back.

If you have questions, please contact Board President Dr. Jasmine Ratliff ([drjasmineratliff@gmail.com](mailto:drjasmineratliff@gmail.com)). **The final deadline to submit your application is January 8, 2021**

**If you are interested in NOMINATING someone (not yourself) to join the board, please send the following to Jasmine (email above) by Monday, December 7, 2020:**

1. Nominee's name
2. Nominee's location (city/town is fine) and farm/organization/affiliation if applicable
3. Nominee's contact info – both phone and email if possible
4. A few sentences about why you are nominating them and why you think they would be a valuable addition to the ASAN board
5. Your name, city/town, farm/org/affiliation if applicable, and contact info

Thank you for helping make ASAN strong!

## WELCOME TO TWO NEW TEAM MEMBERS!

In August, we welcomed two new amazing people to the ASAN staff — read about them below! We also had to say “see you later” to our board member **Danya Knox**, who had to resign from her position for personal reasons. We appreciate her service to the organization!

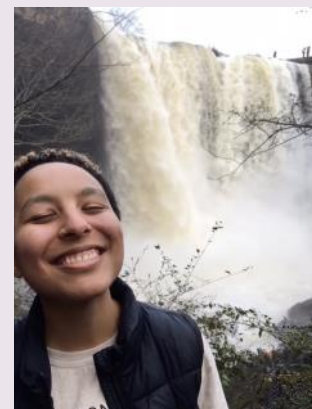
### ADMIN & COMMUNICATIONS ASSISTANT AND JUSTICE FELLOW: MARIAN MWENJA

Marian (they/them) has a multi-layered role, serving both as an Admin & Communications Assistant, and as our first-ever Justice Fellow.

As Admin & Communications Assistant, Marian manages ASAN's social media, contributes to e-blasts/newsletters, and makes sure the organization's gears stay running smoothly.

As the Justice Fellow, they coordinate the formation of ASAN's Justice Committee, and deepen ASAN's partnerships with Black, Indigenous, and People of Color (BIPOC) led organizations doing food justice and food sovereignty work around the state and Southeast region.

Marian, a Birmingham native, grew into a deep love for food justice while studying at Swarthmore College (PA). Through their studies of environmental and black studies, Marian began to understand the scope, severity, and danger of the interconnected crises of climate chaos and anti-Black racism and the exciting role that food justice can play in moving through both of these crises with dignity and healing. You can often find Marian on their meditation cushion with a warm cup of ginger tea, tending their sweet garden, or learning how to draw on the powerful medicines within plants. They are grateful to be a part of an organization that, in centering justice, creates possibilities beyond white supremacist domination and exploitation of peoples and the planet.



### FARMER SUPPORT COORDINATOR: CHARLOTTE PATE

Charlotte Pate (she/her) is ASAN's new and first-ever Farmer Support Coordinator. In this role, Charlotte will be the first point of contact for farmers and aspiring farmers seeking support from ASAN. Charlotte will provide administrative support to the Central Alabama CRAFT Network, and she will coordinate our statewide Farmer Needs Assessment in fall/winter 2020-21 (see page 1).

Charlotte graduated as a Community Engaged Scholar from the University of North Carolina Asheville where she studied Anthropology. After school, she served two years as an AmeriCorps Member in the field of environmental sustainability and conservation with a focus in agriculture in Western North Carolina and Nashville, TN, her first home.

In addition to seasonal farm work positions, she facilitated garden-based education in metro Nashville public schools and libraries through Plant the Seed, and supported urban farming projects through Hands on Nashville. For over two years, she was Farm Coordinator for Paragon Urban Farm, a refugee and immigrant-led community farm on reclaimed floodplain in South Nashville. She served two terms on the Steering Committee of Workers' Dignity/Dignidad Obrera, a worker-led center in South Nashville, as well as two years on the Student/Farmworker Alliance National Steering Committee. She is honored to be part of the ASAN team!



## FORUM (CONT'D)

(Continued from page 1)

for years, will cover topics including:

- Cooperatives 101 - what coops are, why they're great, different kinds, and *how to start and run one*
- Black Land Matters - Black land retention, land trusts, heirs property, coops
- CSAs and Farm Subscription Arrangements
- Social Media (for Non-Social Media People)
- Seed Saving
- Fruit Trees
- Affinity groups / huddles -- several spaces TBD for folks with the same racial, professional, sexual, gender identities to group up
- COVID Adaptation and Preparedness for Farms/Farmers
- Hemp
- Growing your own animal feed
- Irrigation and Water Conservation Show & Tell
- Farm Tools/Equipment Show & Tell



The **campfire sessions** -- marking the beginning, middle, and end of the 11-day series -- will together shed light on historical precedents for surviving moments of immense change and discuss the ways we are all inextricably connected to these systems of domination in order to chart a just, sustainable and cooperative path forward. These include:

- **We've Already Survived the Apocalypse: Lessons for These Times** -- 2020 has been a doozie, but our people have survived so much already. Where can we learn lessons from -- and draw strength from -- the resilience of our ancestors?

- **Racial Justice in Food & Agriculture** -- How does our current food/ag system enrich and impoverish us all? How can racial justice look like liberation for all of us?
- **The New Social/Solidarity Economy** -- How will we then go about building the world we want to live in? How do we carry forward, grounded in our concurrent pandemics of racial injustice and COVID-19?

We incorporated the advice for topics from our input form (thanks

to everyone who filled it out!) and have come up with a robust program that has something for everyone! Plus, we know the Forum is much more than just the material within the sessions, which is why we have an **\*\*\*entire Fun Committee\*\*\*** committed to ensuring that this here Forum will incorporate fun, creativity and healing into and beyond the sessions themselves.

More details for the sessions and registration coming soon! **You can find updates on ASAN's website (<http://asanonline.org/forum2020>) and on Facebook (<http://www.facebook.com/ASANonline>) and Instagram @asanonline.**

## ASAN HELPS PROVIDE OVER \$30K IN COVID RELIEF TO FARMERS AND MARKETS

This summer ASAN administered or co-administered two mini-grant funds for COVID relief: one, supported by the Community Foundation of Greater Birmingham, which put over \$21,000 of

support in the hands of 29 farmers and 9 farmers markets in (or serving) the five-county region surrounding Birmingham; and another, co-administered with the Federation of Southern Cooperatives and funded by Farm Aid, which provided \$8500 to 17 farmers across the state.

Farms and markets responded swiftly and nimbly to this crisis in order to keep serving their essential function within the community. Many farmers — like many others — have been struggling to balance personal expenses like rent/mortgage, utilities, groceries, and medical expenses, alongside often dramatically shifted income/expenses on the farm side of things. These mini-grants have helped relieve a bit of stress and helped keep farmers in business.

One mini-grant recipient wrote, “[Due to COVID] several markets have closed or been delayed, and additional supplies [have been] needed for those still active. Restaurant sales have been greatly reduced 80-90% estimated. Receiving the grant has helped reduce some of the stress associated with the large decrease in sales, sale

- ★ **Two grant funds**
- ★ **Total \$30,310 awarded**
- ★ **Supporting 46 farms and 9 markets**

opportunities, increase expense, and overall uncertainty COVID-19 has caused. With this grant I'll be able to purchase equipment to accept electronic and noncash sales. This will allow me to attend more markets and meet the

social distancing requirements some of the larger markets have implemented.”

Another wrote, “The mini-grant certainly provides a boost both financially and emotionally to us on the farm. More importantly, it reinforces the sense of community that exists between farmers, support organizations, and the consumers of our products. That sense of community is what makes farming so rewarding and is really the reason we are in business in the first place.”

Because every dollar spent with local farmers equates to over \$7 in value to the local economy, keeping these farms and markets in business is not just about keeping them in business (a worthy goal in its own right!), it's about protecting a vital stabilizing taproot of our shared community, shared ecosystem, and shared economy.

**ASAN is grateful to have had the opportunity to provide some measure of cushion to the farmers who make us what we are, who make this community what it is. We are grateful to the Community Foundation of Greater Birmingham and to Farm Aid, for making this support possible.**

## THANKS FOR GRAZING RESPONSIBLY WITH US — NOW KEEP IT GOING!

Greetings Graze fam! We've missed seeing you this year! Thank you for joining ASAN by coming out to "Graze Responsibly" in Birmingham & Huntsville this summer. We've enjoyed being able to highlight the talent of our local restaurants, chefs, and farmers, and help give a little love back to them in a year when they're particularly needing it -- especially after ALL the love they've given us over the years.

We appreciate you showing up to give them love as well, with your likes, comments, and shares. Remember, it doesn't end with this campaign. They all need your ongoing support. "Drive your herds" and show your "Graze Gratitude" by ordering a meal curbside, and visiting your local farmer's market. Why not picnic in your own backyard?!

We were grateful for the opportunity to share what we're doing to grow, nurture, and support our local food systems across Alabama. Right now, it feels more important than ever. We hope over the course of our Graze Responsibly campaigns, you've learned a bit more about the importance of investing in ASAN membership and how it affects you, and your communities.

And hey, at least we didn't have to worry about the weather!!!

A special thanks to Brilliant So Brilliant for making our graphics pop! And forever-gratitude to our chefs, restaurants, and farmers who participated! (>>>)

We'll see you in 2021!!!



>>> Alchemy Farms & Plants, The Bottle Huntsville, Brix & Embers, Chef Rick Vonk, Farm Burger Huntsville, Hippea Camper, Humble Heart Farms, Scott's Orchard, The Veggie, What's for Supper?, Whirlwind Farm, The Wild Berry



>>> badder batter, Blue Rooster Farms, Continental Bakery ~ Chez Lulu, Downstairs Diner ~ East Lake Market, DSR Farms, Food Integrated Training Inc, Grandview Farm, Hamm Farm, Ireland Farms, Jones Valley Teaching Farm, Little London Kitchen ~ The Little London, Mountain Sun Farm, My Underground Cook ~ Underground Cooking Academy, North Alabama Wagyu, Red Sea Ethiopian & Mediterranean, Stillwater Farm, Sweet City Micros, Walden Farmacy

## It's About OPPORTUNITY

*Let's finance yours.*

If you qualify as a Young, Beginning, Small, or Minority farmer, First South can guide you through the YBSM financing program and related services customized to fit your unique needs. Let's Talk!



**First South**  
*Farm Credit*

*Let's talk*



800-955-1722

FIRSTSOUTHLAND.COM

## NEEDS ASSESSMENT (CONTINUED)

*(Continued from page 1)*

participation from ASAN's community of producers, we will be able to see ripples and common themes that are upheld across the interviews. This assessment, conducted with a focus on relationship building, will enable ASAN to grow as a network and better support farmers through ASAN programs, structure, and resources.

After the assessment is complete, these common themes and findings will be brought to the network in order to inform our programming, resources, and opportunities for relationship-building for producers -- in short, the FNA will help ASAN to better serve you and farmers like you throughout the state.

The information you share with us will be kept confidential and anonymous; information will not be shared without the consent of the participant. However, we will combine your information with that of other producers so that we can talk in general terms about the needs of producers and aspiring producers in Alabama.

These interviews will follow COVID-safe procedures, and participants will be paid a stipend of \$50 for participating. We are looking for producers who are ASAN members and those who might not know of ASAN yet, to participate, so please spread the word near and far across Alabama!

To schedule an interview or learn more about the assessment, you can reach out to Charlotte at [charlotte@asanonline.org](mailto:charlotte@asanonline.org). We hope you consider being a part of this important project!

## NEWS FROM YOUR NEIGHBORS

Congratulations, farewell, and good luck to **Cassandra Searight**, who recently wrapped up eight years of service with **USDA FSA** in Montgomery. She moves into a brand new field, in a position with Homeland Security, Federal Protection Service, in Washington, DC. She remains ready and willing to support farmers however she can — and invites folks to contact her at 228-235-1526. We wish you the best Cassandra!

Congratulations to **Frannie and Charlie Griffin** of **Hepzibah Farms** in Talladega, who welcomed their fourth child, **Mars Wave**, into the world in on October 3! Mars entered the world like a rocket and is being doted on by his three older siblings, Eversole, Charlie, and Cicely.

We say “see ya later” to ASAN member, volunteer, and CRAFT Steering Committee member **Laura Rodgers**, who moved to Santa Cruz, CA, in August. She is enjoying the scenery (other than the wildfires!) and is excited to get connected to ag on the West Coast!

Congratulations to ASAN’s own Youth Forum Coordinator **sav miles**, who was awarded a major grant from the Bill and Melinda Gates Foundation, to support their Community Protectors Project. The Project’s goal is to organize faith congregations in Etowah County to build towards racial and economic justice. Sav and their team will lead virtual community Bible studies on liberation theology, and leadership development classes with participants to grow as community organizers. Congratulations sav!

Congratulations to **James Miles** of **ACES**, who retired this summer!

## CLASSIFIEDS AND RESOURCES

**FOR SALE:** Lightly used BCS brand 32" **Power Harrow** asking \$1800 & Land-Pride **single-bottom plow** (minus the coulter shown in the picture) asking \$700. \$2200 for both. Both ideal for loamier/sandier, slightly less

dense soil. Located in New Orleans, can be picked up or shipped (deliver charges apply). Could throw in 4 **toolbar sweeps** to interested party. If interested, email: riverqueengreens@gmail.com.

**FOR SALE:** Farmland in Geraldine AL (DeKalb Co). 17ac fenced and cross fenced, a wet weather pond, 2.5 ac field that has vegetables growing on it. Has a single wide trailer on it, not in good condition. Has a shop/garage with a tall bay door, several sheds. Has septic and electric. There is a 135 Massey tractor, bush hog, disc, moulboard plow, cultivator, several pieces of equipment. Some pastures have been bush hogged and others have 2 years of growth on them. Dove and Russell Stackhouse of Whirlwind Farm (sustainable/organic vegetable growers and ASAN co-founders) share an easement/drive with this property and are trying to help sell it for the owner - they would love to find someone of like mind or a young farm family. It is \$65,000 with equipment \$60,000 without. Call/text (text preferred) Russell for more details, 256-465-1614.

**FOR SALE:** Like new (used twice & stored indoors) **2012 Grillo G85D** (10 Hp Kohler engine gas); **Berta rotary plow**, Grillo 27" tiller. \$3K for all 3. Located on Smith Lake, near Cullman. Contact Gary at (205) 837-7203 or Burtchmartin143@me.com.

**FOR SALE: ORGANIC IRRIGATED LAND** in Slocomb, AL. 180ac for sale by owner, certified organic, \$4500/acre. includes 110 acre Pivot & 800 Sq. Ft. House. Part of **Working Cows Dairy**. Call Rinske De Jong at 334-886-3839.

**FOR SALE: ROLLER CRIMPER:** ASAN is selling a custom-made 8' two-stage **roller crimper**. Attaches to three-point hitch. Located in Shorter, AL. Must be a current paid ASAN member in order to purchase. **REDUCED PRICE \$2000**. For more information and photos go to <http://asanonline.org/rollercrimper>.

**FOR SALE:** Home and four acres of land in a secluded area on Killough Springs Road in Roebuck, AL. Has house spring water well. Would make excellent organic farm. \$75,000. Contact Mary McCart at (205) 222-6659.

These sections appear in every newsletter and feature updates both personal and professional, on ASAN members and friends: anything from a new farm, to a new baby.

They make existing resources known to others, and help spread the word for those looking to connect. Connecting people in this, the barest-bones of ways, we hope to provide a jumping-off point for folks to connect on their own in deeper ways.

Have something you want us to publish? Send it to [alice@asanonline.org](mailto:alice@asanonline.org) or (256) 743-0742.

**FOR SALE:** 4 bedroom, 3 bathroom home and farm in Fairview, Alabama. 10.5 acres. Good potential for homesteader and/or homeschooler. Contact Jonathan Haynes at (256) 339-2856.

**JOB POSTING:** Farm Aid is hiring part-time Hotline Operators to answer their hotline, provide a listening ear to farmers, and connect them to the resources they need. Starting salary \$24-26K for an expected 18 hours/week, all remote. For more detail go to <https://www.farmaid.org/about-us/careers/>.

**JOB POSTING: The Farmers Market Coalition** has several openings: Curriculum Consultant, Grant Writing and Development Consultant, and WordPress Design Contractor. More details at <https://farmersmarketcoalition.org/joinus/employment/>.

**RESOURCE AVAILABLE:** Grants Available for Livestock & Poultry Farmers -- Food Animal Concerns Trust (FACT) is accepting grant applications for livestock and poultry farmers who wish to expand animal welfare, build capacity, and/or improve pasture for their animals. Grants of up to \$2,500 are available for projects such as building mobile housing, constructing fences, laying water lines on pasture, and much more. Farmers located in the U.S. who raise beef cattle, bison, broiler chickens, dairy cows, goats, laying hens, pigs, turkeys, and/or sheep may be eligible to apply. For more information and to apply online, go to <https://foodanimalconcernstrust.org/grants/>. Applications are due by December 1, 2020.

(Continued on page 7)

Help us cultivate a resilient agricultural system in Alabama.  
**Join ASAN or renew your membership today!**

Name \_\_\_\_\_

Business \_\_\_\_\_

Address \_\_\_\_\_

City \_\_\_\_\_ State \_\_\_\_\_ ZIP \_\_\_\_\_

Phone \_\_\_\_\_

Email \_\_\_\_\_

You will receive monthly e-updates and occasional other email communications. Check here to also receive our quarterly print newsletter: \_\_\_\_\_

You will receive an email receipt for your contribution.

Check here if you'd also like a paper acknowledgement: \_\_\_\_\_

The base membership fee is \$25 annually; however, any contribution is considered a membership due. Please contribute what you can! All donations are tax-deductible.

\$\_\_\_\_\_ **Membership dues enclosed**

\_\_\_\_\_ Check number

\_\_\_\_\_ Date submitted

Please mail checks made out to ASAN to:  
 PO Box 2533, Birmingham, AL 35202.

Questions? Contact [info@asanonline.org](mailto:info@asanonline.org)  
 or (256) 743-0742.

(Continued from page 6)

**RESOURCE AVAILABLE:** Hardship Assistance Grants for Organic Producers. If you—or an organic producer you know—have experienced hardship during the 2020 calendar year, consider applying for financial assistance through the Bricmont Hardship Assistance Fund. Two

deadlines -- May 25 and Nov 20, 2020. Documentation of economic loss and organic certification is required. Assistance awarded based on need and available funds. For more details contact the CCOF Foundation at [ccofoundation@ccof.org](mailto:ccofoundation@ccof.org), or (831) 423-2263.

## UPCOMING EVENTS

DETAILS FOR THESE EVENTS  
 AND MORE, AT [WWW.ASANONLINE.ORG/EVENTS](http://WWW.ASANONLINE.ORG/EVENTS)

September 17-November 19 - online  
**Small Farm School 2020**

October 19 - online  
**Central Alabama CRAFT—Biodynamic Farming at Luddite Farm**

October 26-27 - online  
**Farm & Food Leadership Conference 2020**

October 27 - online  
**At Home Beekeeping Series**

November 6 - online  
**Master Beef Short Course: Funding/ Resources**

November 15 - online  
**Central Alabama CRAFT—Ireland Farms**

November 24 - online  
**At Home Beekeeping Series**

November 30 - online  
**Commercial Horticulture Team Webinar Presentation**

December 3-13  
**ASAN Food & Farm Forum (see page 1)**

December 6-8 - Tuskegee  
**78TH PAWC CONFERENCE**

December 29 - online  
**At Home Beekeeping Series**

## Submit your event to our events calendar!

Email [mindy@asanonline.org](mailto:mindy@asanonline.org) and include:

- Name of event
- Host group and contact info
- Location (including full address)
- Date/time
- Price
- Link to event website, Facebook event page, and/or flyer, if there is one.
- Short (3-4 sentences) description of the event written in "third person" (i.e. "XYZ Club invites you to join them for their annual meeting" vs "join us for our annual meeting")
- Please send information in the body of the email, not simply a flyer or attachment. We can link to something already online but can't upload a PDF flyer.

January 5 - online  
**Master Beef Short Course: Facilities/Fencing Webinar**

March 3 - online  
**Master Beef Short Course: Profitability and Value-Added Practices**

# ASAN

PO Box 2533  
Birmingham, AL 35202

Coming to the wrong person? Email [alice@asanonline.org](mailto:alice@asanonline.org) to unsubscribe your address. Thanks!

Follow ASAN!



} @ASANonline

What do YOU want to read about? Send us your ideas or suggestions for future features!

*healthy farms,  
healthy foods,  
healthy communities.*

## Are you an ASAN member?

We are recommitting to being a grassroots membership-driven organization! Members drive our direction and our decision-making, and membership dues support our efforts to train farmers, educate consumers and policy makers, and strengthen the bonds that hold together our local food system.

We now have just one membership level (for individuals, farms, households, etc), and a sliding scale rate -- the base recommended membership fee is \$25, but any amount, large or small, will make you a member.

We also invite members to get involved! Maybe join an event planning committee for the Food & Farm Forum, Graze: Birmingham, or the inaugural Graze: Huntsville! If you manage a farmers market, we hope you'll consider joining our pilot Farmers Market Leadership Committee. Contact us if you're interested!

Please join or renew today! Use the form on page 7 or go to <http://asanonline.org/join-asan>.